

Atlas Copco



TwinAir

Experience the highest airflow

XRV 946 - XAH 1066

TwinAir

The highest air flow at the smallest footprint

The TwinAir™ is especially designed to offer you the highest volume of compressed air per square meter of footprint and to be the most robust, versatile and safest air supply unit on the market. Atlas Copco's expertise in compressor design and the in-house developed screw element make the TwinAir the compressor that provides the highest air flow per square meter.

The TwinAir concept

The Atlas Copco's TwinAir compressor is a package of two oil-injected rotary screw compressors, powered by two liquid-cooled, six cylinder turbocharged inter-cooler diesel engines. Both compressors can be used combined or separately from each other, increasing the versatility. We offer 2 models: a single stage 12 bar, and a two stage 25 bar TwinAir.

Optimized for transport

The TwinAir is enclosed in a DNV 2.7-1 compliant container, offering save handling both during transport and installation. During transport, the TwinAir can be handled as CSC certified container cargo. All models are compliant for offshore usage.

Stop compressing air – start controlling it!

The TwinAir features our latest Xc4004 compressor controller. We believe a controller should put you in complete control, while being intuitive, and most importantly easy to use and navigate. Smart controls also protect your investment: improve your efficiency while drastically decreasing the operating costs of your equipment through advanced insights.



A versatile package that fits your needs

Increase the utilization of your investment

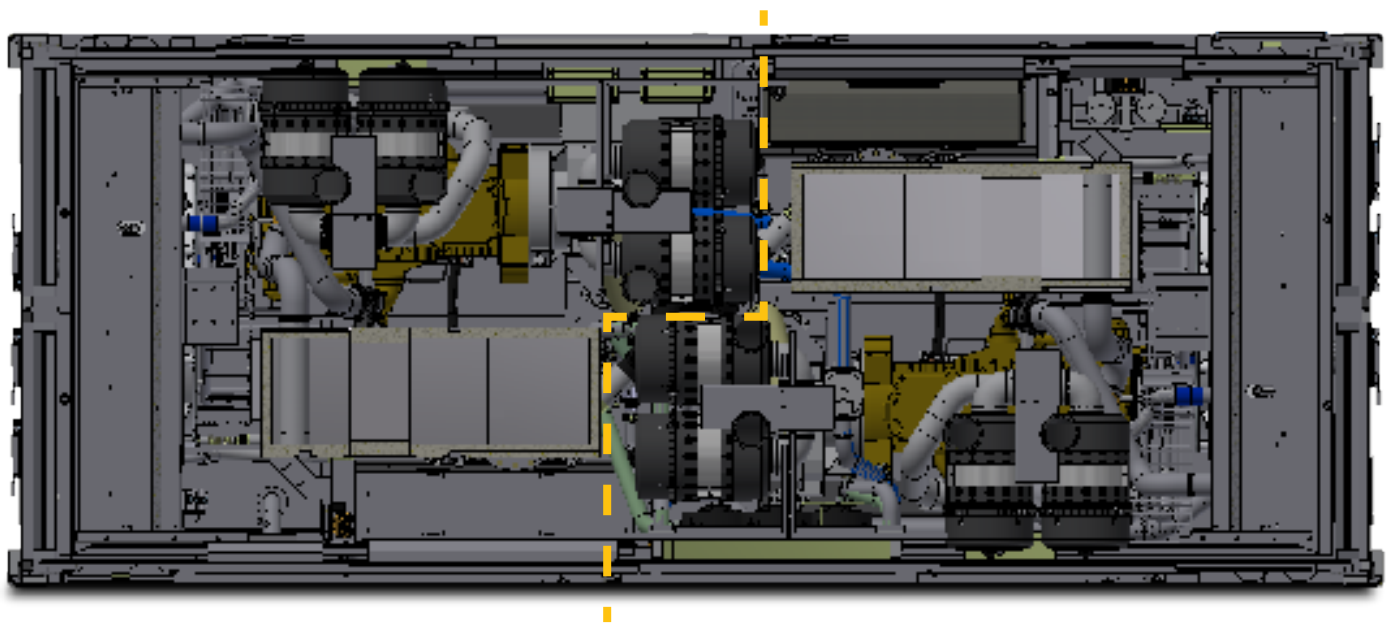
Modularity is key for the TwinAir. This container package consists of 2 stand alone compressors that can be used independently from each other (for redundancy) or combined. The Twinair can be used according to your needs.

Maximum power

When you need 1058 l/s of compressed air, the Twinair XAH 1066 is the smallest compressor package that is able to give you this output. The TwinAir XRV 946 offers pressures up to 25 bar, while still giving high flows.

Redundancy and versatility

The Twinair is also the perfect solution when you require up to 529 l/s of compressed air and need full redundancy for your application. You can use both compressors separately, in case of failure or service, the other compressor can take over so you reach optimal efficiency.



Discover the TwinAir compressor



Transportability

The TwinAir compressor is packaged in a DNV compliant 20 foot container with forklift slots, slings and lifting eyes. The container is easy to move around and can even be stored to 8 high.

The TwinAir is also CSC certified.
(transportable as container cargo)

Fit for high ambient temperatures

The cooling system is suitably designed for continuous operation in ambient conditions up to 46°C, with all canopy doors closed. The design features a double ceiling roof, ensuring optimal cooling of the axial fan.

For conditions that exceed 46°C, an optional high ambient package is available.



Robust design

The TwinAir compressor was tested both in lab and field conditions to ensure optimal performance. It's designed to withstand the toughest working conditions.

A three layer protection coating of all bodywork under corrosive category C3 prevents corrosion and improves life time.

Increased reliability in hazardous environments

Several features make the TwinAir suited for use in hazardous areas.

- The spark arrester prevents hot particles leaving the exhaust pipes.
- Additionally the inlet shutdown valve protects the engine from over-speeding when a combustible gas is taken in.

Up to
1058 l/s in a
20 foot container

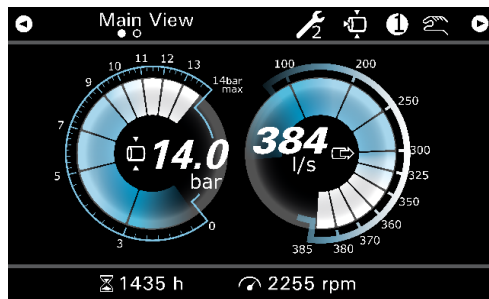
HIGH UTILIZATION AND PRODUCTIVITY

C5M CERTIFIED CANOPY
WITH THREE LAYER COATINGS

HIGH AMBIENT TEMPERATURE
PERFORMANCE GUARANTEED

SPILLAGE FREE FRAME WITH 110% CONTAINMENT

Xc4 SMART AIR CONTROLLER



Smart Xc4004 air controller

- Easy to use interface (7 inch screen, simultaneous view of pressure and flow)
- Powerful insights increase uptime (easy access to 15 parameters, increase uptime through preventive maintenance)
- Save time through remote controlling. With our mirror application, you can control the TwinAir from a distance.



Take care of your environment

The TwinAir is standard equipped with 110% containment spillage free frames, avoiding any contamination of the environment, no matter the circumstances. The drain plugs are centralized for ease of use.

Minimize downtime for service

- Centralized service drains
- Maintenance service kit
- Large access doors
- Door latches with locks and door safe-hooks

Stop compressing air – start controlling it!

Smart Air Xc4004 controller

The Smart Air Xc4004 controller features the latest innovations. We believe a controller should put you in complete control, while being intuitive, and most importantly easy to use and navigate. Smart controls also protect your investment: improve your efficiency while decreasing the operating costs of your equipment through advanced insights.

Advanced features:



Smart user interface with key parameters at first sight.



Mirror application for remote control.



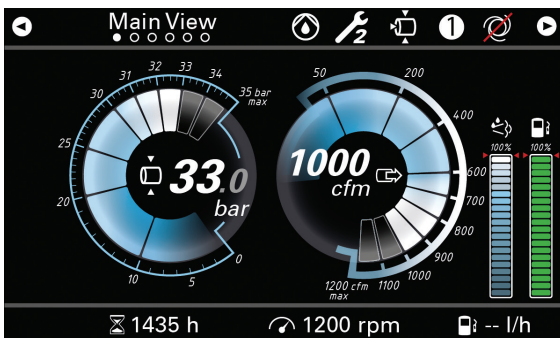
Audible, clear warning system for any deviations.



Robust design which resists water and dust (IP67 rated).



Takes efficiency, control and connectivity to the next level.



Easy to use interface

- 7 inch LED screen.
- Simultaneous view of pressure and flow increase control on the output flow required by your application.
- Visible fuel and add blue levels as well as running hours avoid unnecessary downtime.
- Personalised interaction through metrics and language settings.

Powerful insights increase uptime

- Easy access to trends of 15 parameters.
- Increase uptime through preventive maintenance.



Save time through remote controlling

- Mirror application: control feed air compressor through second controller at point of use.
- All machine parameters remotely adjustable: ECO-mode, Dynamic Flow Boost, multi pressure / flow settings, emergency stop.
- Hard wired with a 30 or 60 meter cable connection.

Technical data overview

| | | XAH 1066 | XRV 946 |
|--|-------|----------|---------|
| Normal effective working pressure | bar | 12 | 25 |
| Actual Free Air Delivery ¹ | l/s | 1042 | 920 |
| Max. sound power level (Lw) ² | dB(A) | 110 | 110 |
| Max. sound pressure level at 7m (Lp) | dB(A) | 82 | 82 |
| Oil Capacity | l | 80 | 75 |
| Max. ambient temperature | °C | 48 | 48 |
| Max. ambient | °C | 43 | |
| Air Compressor outlets | | 2 x 3" | 2 x 3" |
| Maximum altitude | m | 3000 | 3000 |
| Minimum starting temperature | °C | -10 | -10 |

Engine

| | | C13 ATAAC | C13 ATAAC |
|-------------------------------|-------|-----------|-----------|
| Caterpillar | | C13 ATAAC | C13 ATAAC |
| Number of cylinders | | 6 | 6 |
| Output at rated speed | kW | 317.8 | 317.8 |
| Swept volume | l | 12.5 | 12.5 |
| Engine speed (nominal) | r/min | 1600 | 1600 |
| Engine speed (unloaded) | r/min | 1200 | 1200 |
| Capacity oil system | l | 44 | 44 |
| Capacity of fuel tank | l | 1600 | 1600 |
| Fuel consumption at 0% load | kg/h | 62 | 60.4 |
| Fuel consumption at 25% load | kg/h | 72.2 | 69.2 |
| Fuel consumption at 50% load | kg/h | 78.2 | 78.4 |
| Fuel consumption at 75% load | kg/h | 90 | 94 |
| Fuel consumption at 100% load | kg/h | 117.8 | 124.2 |

1 according to ISO 1217 ed.3 1996 annex D

2 according to 2000/14/EC, 84/533/EEC and 85/406/EEC limits

| Available options | Standard | Offshore | Dimensions | XAH 1066 | XRV 946 | |
|---|----------|----------|------------|----------|---------|--------|
| COSMOS™ service and maintenance system | O | O | Weight | kg | 14 500 | 15 000 |
| Inlet shutdown valve | O | O | Length | mm | 6058 | 6058 |
| FuelXpert™ | O | O | Width | mm | 2438 | 2438 |
| OilTronix™ | O | O | Height | mm | 2591 | 2591 |
| Spark arrester | O | V | | | | |
| Yellow alert (hard-wired emergency stop connection) | | O | | | | |
| Stainless steel fuel lines | | O | | | | |
| External fuel connection with cut-off | | O | | | | |

Power Technique Solutions Portfolio

Atlas Copco's Power Technique Business Area has a forward-thinking philosophy. For us, creating customer value is all about anticipating and exceeding your future needs – while never compromising our environmental principles. Looking ahead and staying ahead is the only way we can ensure we are your long term partner.

Air compressors

Ready to go



- 1-5 m³/min
- 7-12 bar

Versatility



- 5.5-22 m³/min
 - 7-20 bar
- *Diesel and electric options available

Productivity partner



- 19-116 m³/min
- 10-345 bar

Handheld tools

Pneumatic tools



- Breakers (2.5 – 40 kg)
- Rockdrills (5 – 25 kg)
- Underground Rockdrills
- Additional Air Tools

Hydraulic tools



- Breakers (11 – 40 kg)
- Additional Hydraulic Tools
- Powerpacks

Petrol engine driven tools



- Breakers & Tie Tampers (25 kg)
- Combi Drills (23 Kg)

Generators



- Portable
- Mobile
- Industrial

*Multiple configurations available to produce power for any size application

Light towers



- Diesel LED and MH
- Electric LED
- Battery LED

Dewatering pumps



- Submersible
- Surface
- Small portable

*Diesel and electric options available

Photos and illustrations contained herein might depict products with optional and/or extra components which are not included with the standard version of the product and, therefore, are not included in a purchase of such product unless the customer specifically purchases such optional/extra components. We reserve the right to change the specifications and design of products described in this literature without notice. Not all products are available in all markets.