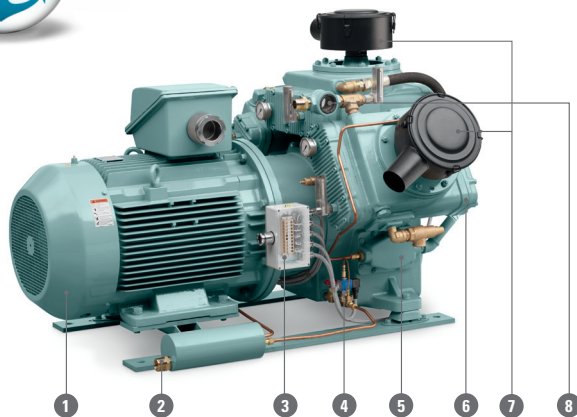
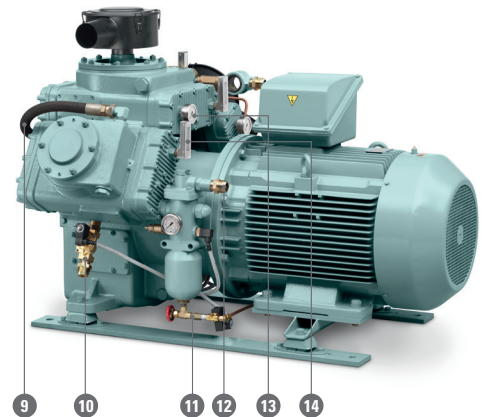


# Marine Air Systems

LT KE water-cooled piston compressors for starting air (18.5-90 kW / 25-125 hp)



- 1 Marine e-motor with flex coupling
- 2 Sound muffler on drain collector for low noise levels
- 3 Junction box for easy installation
- 4 Auto drain valves on first and second stages as well as unloaded start
- 5 Internal crankcase ventilation chamber avoids oil fumes venting to ambient air
- 6 Water-cooled air coolers
- 7 Air inlet with replaceable filter element
- 8 Cooling water flow indicator



- 9 Standard cooling water hoses
- 10 Cooling water inlet solenoid valve to avoid condensation
- 11 Built-in oil-water separator
- 12 Air outlet with standard non-return valve
- 13 Glycerine-filled pressure gauges on every stage
- 14 Temperature gauges fitted where you need them, to give you full control and overview

## Features and Benefits

### Efficient and Reliable

- Forced air flow around crankcase reduces condensate to zero and extends bearing life
- Suitable for sea water and fresh water cooling at ambient temperatures up to 60°C
- Outstanding efficiency through the whole range

### Low Cost of Ownership

- Limited number of parts
- Long maintenance intervals
- All components and service points are easily accessible
- Dismantling valves takes only a few minutes
- No electronic temperature and pressure sensors – all readable on compressor

### Low Running Costs

- Highly durable components extend compressor lifetime
- Synthetic oil used as standard
- Low oil consumption: less than 0.2 g/kW/hr

### Easy Installation

- Small footprint
- Supplied with baseplate and delivered as plug-and-play unit for quick installation
- No need for canopy

### Quiet Operation

- Silencing intake guarantees low noise levels: max. 91 dB(A)
- V-type construction ensures low vibration: less than 14 mm/sec.
- Sound muffler on condensate drain as standard

## Scope of Supply

- Certification
- Cooling water shut off solenoid valve
- Non-return valve
- Auto drain valves
- Oil-water separator
- e-motor IP55 including condensation heater
- Re-silent chocks
- Flanged connections
- Synthetic oil
- Approval drawings
- Spare parts & instruction manual

## Options

- Starter box IP55, Y/D
- Cooling water pump
- Seawater cooling
- Pressure switches
- Spare parts kit

## Technical Specifications

| Compressor type | Capacity*         | Bottle charging   | Frequency | Power |     | Motor speed | Cooling water flow | Heat dissipation | Dimensions |        |        | Weight |      |
|-----------------|-------------------|-------------------|-----------|-------|-----|-------------|--------------------|------------------|------------|--------|--------|--------|------|
|                 | m <sup>3</sup> /h | m <sup>3</sup> /h | Hz        | kW    | hp  | rpm         | l/min              | kcal/h           | L (mm)     | W (mm) | H (mm) | kg     | lbs  |
| LT 25-30 KE     | 55                | 60                | 60        | 15    | 20  | 1170        | 17                 | 8800             | 1228       | 794    | 785    | 570    | 1257 |
|                 | 69                | 75                | 50        | 18.5  | 25  | 1470        | 21                 | 11050            | 1228       | 794    | 785    | 570    | 1257 |
|                 | 83                | 90                | 60        | 22    | 30  | 1770        | 25                 | 13310            | 1228       | 794    | 785    | 570    | 1257 |
| LT 30-30 KE     | 74                | 80                | 60        | 18.5  | 25  | 1170        | 22                 | 11720            | 1296       | 794    | 785    | 570    | 1257 |
|                 | 92                | 100               | 50        | 22    | 30  | 1470        | 28                 | 14730            | 1296       | 794    | 785    | 570    | 1257 |
|                 | 111               | 120               | 60        | 30    | 40  | 1770        | 33                 | 17730            | 1296       | 794    | 785    | 570    | 1257 |
| LT 35-30 KE     | 92                | 100               | 60        | 22    | 30  | 1170        | 22                 | 11720            | 1296       | 794    | 785    | 890    | 1962 |
|                 | 115               | 125               | 50        | 30    | 40  | 1470        | 28                 | 14730            | 1296       | 794    | 785    | 890    | 1962 |
|                 | 139               | 150               | 60        | 30    | 40  | 1770        | 33                 | 17730            | 1296       | 794    | 785    | 890    | 1962 |
| LT 40-30 KE     | 106               | 115               | 60        | 30    | 40  | 1170        | 31                 | 16560            | 1364       | 1027   | 892    | 890    | 1962 |
|                 | 134               | 145               | 50        | 37    | 50  | 1470        | 39                 | 20950            | 1364       | 1027   | 892    | 890    | 1962 |
|                 | 162               | 175               | 60        | 37    | 50  | 1770        | 47                 | 25410            | 1364       | 1027   | 892    | 890    | 1962 |
| LT 50-30 KE     | 134               | 145               | 60        | 30    | 40  | 1170        | 38                 | 20500            | 1364       | 1041   | 899    | 890    | 1962 |
|                 | 166               | 180               | 50        | 37    | 50  | 1470        | 48                 | 25940            | 1364       | 1041   | 899    | 890    | 1962 |
|                 | 204               | 220               | 60        | 45    | 60  | 1770        | 58                 | 31460            | 1364       | 1041   | 899    | 890    | 1962 |
| LT 60-30 KE     | 162               | 175               | 60        | 37    | 50  | 1170        | 45                 | 24440            | 1386       | 1041   | 899    | 890    | 1962 |
|                 | 204               | 220               | 50        | 45    | 60  | 1470        | 57                 | 30930            | 1386       | 1041   | 899    | 940    | 2072 |
|                 | 241               | 260               | 60        | 55    | 75  | 1770        | 69                 | 37510            | 1386       | 1041   | 899    | 940    | 2072 |
| LT 100-30 KE    | 268               | 290               | 60        | 55    | 75  | 1170        | 72                 | 38780            | 1553       | 1190   | 1066   | 1380   | 3042 |
|                 | 333               | 360               | 50        | 75    | 100 | 1470        | 89                 | 48390            | 1553       | 1190   | 1066   | 1380   | 3042 |
|                 | 398               | 430               | 60        | 90    | 125 | 1770        | 108                | 58660            | 1553       | 1190   | 1066   | 1380   | 3042 |
| LT 125-30 KE    | 315               | 340               | 60        | 75    | 90  | 1170        | 84                 | 45620            | 1591       | 1190   | 1066   | 1380   | 3042 |
|                 | 398               | 430               | 50        | 90    | 125 | 1470        | 106                | 57700            | 1591       | 1190   | 1066   | 1450   | 3197 |

\* Free air delivery measured according to ISO 1217, Annex C, latest edition

Reference conditions:

- Absolute inlet pressure: 1 bar(a), 14.5 psig

- Intake air and coolant temperature: 20°C

